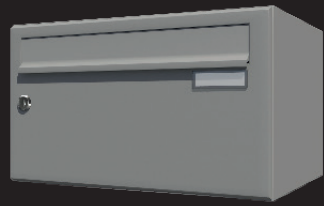


Model 2010-2



15 Years
Warranties Corrosion Resistance



Robust and elegant Large Volume



Horizontal, space-saving letterboxes. With an elegant simple design and a large choice of finishes, our model 2010-2 is the solution for equipping your lobby with high quality letterboxes. To adapt to the number of occupants and your architectural constraints, the 2010-2 series is available in different configurations suitable for indoor or outdoor use.

Advantages

- ✓ 3 Modular construction with concealed hinges contribute not only to ergonomics but also to the robustness of the letterbox system.
- ✓ No welding processes, as a measure for high resistance to corrosion and long-lasting use of the letterbox system.
- ✓ 3 Various numbering options.

Methods of installation



Wall mounted



Recessed into the wall



Freestanding

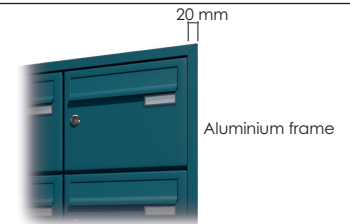
Casing



Without casing

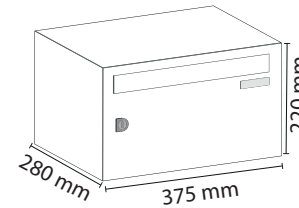


Casing from sheet steel



Aluminium frame

Technical description



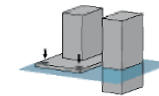
Letterboxes comply with the European and British standards **BS EN13724**.

Secured By Design compliant
Box made of electro-galvanised sheet steel.
Door made of 1 mm electro-galvanised steel.
Invisible stainless steel hinges.
Integrated plastic nameplate holder.
Standard flap with noise reduction device/.
Mail removal protection.
Powder coated in RAL 100 % polyester.
Secured cylinder lock with two numbered keys.
Volume suitable for A4 mail.

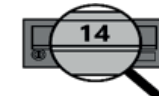
Options



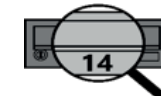
Large choice of finishes available



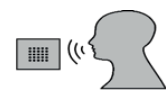
Legs with base plates or set in concrete



Permanent numbering by ink transfer on the flap



Permanent numbering by ink transfer on the Door



Intercom Box



2 keys



Dummy Doors

